



### Project Overview:

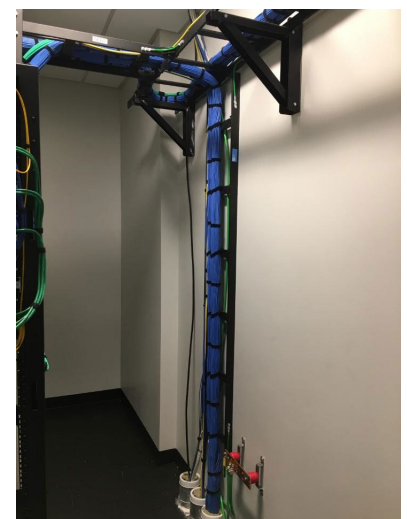
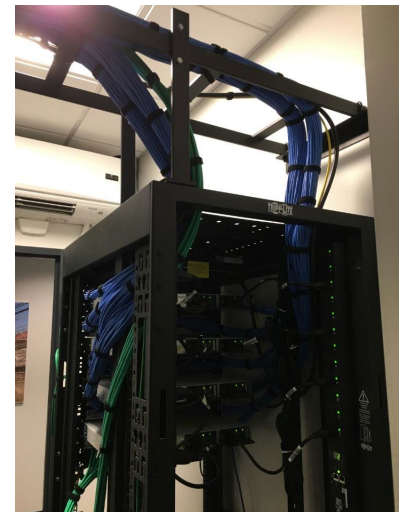
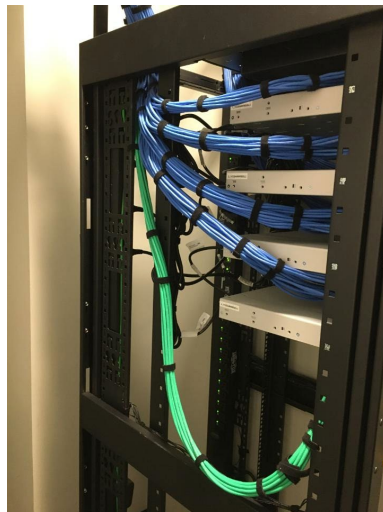
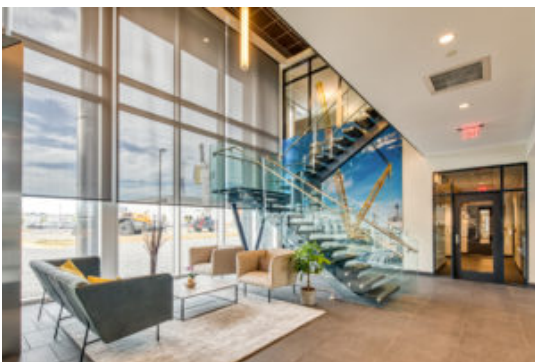
The newly expanded Liebherr USA, CO. headquarters in Newport News, VA features a 60,000 square foot administration building, a 82,000 square foot workshop and training facility, a 92,000 square foot parts and distribution warehouse with retail operations, a guardhouse, and a one story 7,500 square foot wash bay building. The new facilities total over 251,000 square feet in addition to the company's existing 560,000 square foot campus and are occupied by Liebherr USA, Co. Their US headquarters is located on a 30-acre green site and includes high end finishes and is structurally designed for future expansion.

### Scope of Work:

Secured Network Solutions, Inc. (SNS) had the privilege to be contracted by Liebherr Mining Equipment, Co. to furnish and install Ethernet patch panels, cabling, TV, conferencing and projector drops in all the buildings on the new campus at 4800 Chestnut.

### Unique Project Conditions:

Initially SNS was contracted to provide only labor to install the cable infrastructure, but the owner's loss of confidence in their IT consultant resulted in SNS designing, furnishing and installing the entire cable infrastructure, including data center, access control and closed-circuit television system. Even though SNS's initial design engagement occurred after the construction had already begun, SNS was able to maintain the project schedule and required no delays.



*"SNS did an outstanding job and Liebherr couldn't be happier at this stage in the project (100% Success) and as a result - please rest assured that we will consider you for future projects.*

*In light of this successful story, we produced a film recently that I wanted to share with you! This short, features some of your exceptional workmanship – please enjoy. <https://youtu.be/u9vU2YrB3N4>"*

**Mac Kloberg, IT Senior Manager, Liebherr Mining Equipment, Co.**